



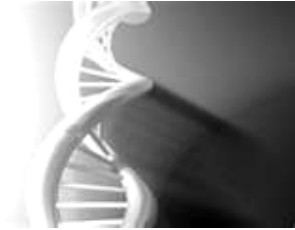
Nano Technology-Best solution for skin whitening, anti-aging and firming effect.



Gene Re-Birth System

About GENOSYS

Human body composed of 60 trillion cells and each cell contains approximately 22,000 gene code which is called GENOME, What cause skin aging? Modern science claims that one of DNA damage in cell trigger skin aging as major factor. UV rays, harmful chemicals, pollution affects skin aging as external factors and free radical attack is its major internal factor. To delay and prevent aggressive skin aging process, we need to deal with not only external treatment but also internal cell-repair regime.



GENOSYS concept and its regime are born based on fundamental resolution to deal with skin-aging progress. Conventional cosmetics have not established to bring remedy and prevention measures to treat skin aging, but now GENOSYS finally open the new era in cosmeceutical field by introducing its fundamental and powerful remedy to make skin remodeled, repaired and ultimately regenerate for youthful healthy skin.

- Most powerful anti-oxidant and its oxidization by air and heat is prevented by its break through technology called “ENB-VCE”
- The essential booster for cell metabolism “Ubiquinone”, cell matrix builder and healing, hydrating “Hyaluronic acid”, excellent anti-oxidant minerals like “Organic Silicium”
- Powerful stimulator of skin stem cell and innovative skin remodeling contributor “Cytokine” and Peptide complex”.
- The state of art intradermal delivery system of its highly functioning ingredients to deeper dermis layer by micro-needling technique and capsulised nano particle formula.

Nano Technology

Multi vital sphere is a Nano emulsion which contains active ingredient such as Ethyl Ascorbyl Ether, Adenosin, and Ceramide in a liposome form. Best solution for skin whitening, anti-aging and firming effect.

Benefits

- Nano sized emulsion enables to penetrate into skin deeper.
- Fast skin absorption with no sticky feeling
- Gives light skin touch
- Excellent skin affinity with major component of skin cell
- Best antioxidant effect with skin whitening
- Synthesis of fibroblast and collagen enable skin firming effect

 GENOSYS DTS Roller



 DTS Roller vs. Other Roller Differences



A NEW CONCEPT TO INDUCE COLLAGEN NATURALLY IN YOUR DERMAL LAYER

Innovative intradermal delivery system, active cosmetic ingredients penetrate to deeper dermis layer and stimulate collagen production by induce wound healing procedure.

Microneedling

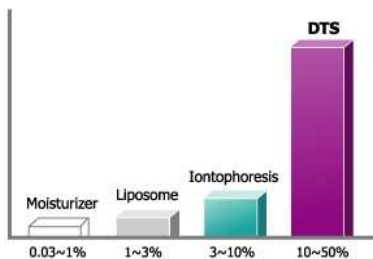
Diskneedling can be an alternative to laser resurfacing in patients not suitable for laser treatment or wishing to have a less invasive procedure with fewer risks. Conventional treatments frequently involve expensive and highly invasive procedures like chemical peels or laser resurfacing. These procedures have sometimes offered inconsistent or disappointing results. Diskneedling is a safer alternative and improve wrinkle, acne scar, pigment and stretch mark.

Roller creates more than 500,000 channels within 5-10 minutes, deep into the epidermis of the skin, which is the main obstruction to penetration of active ingredients. The active ingredients in the skincare products can reach into the depths of the skin more effectively than by simply applying the products topically.

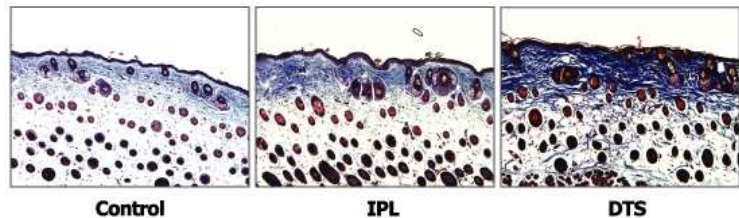
Diskneedling creates minimal dermal damage without the removal of the healthy epidermis, which happens with other resurfacing techniques. Because the epidermis is left intact, the healing period is rapid. The more collagen can be made consequently natural collagens to occur.

Application

Transdermal Delivery System [TDS]



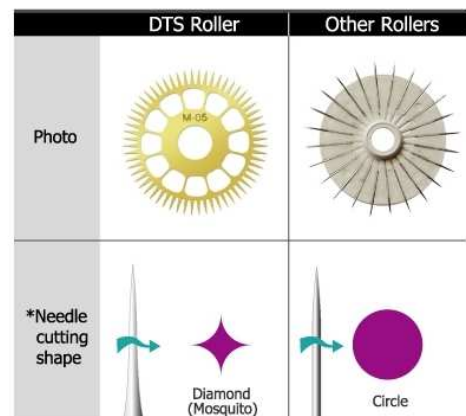
Natural Collagen Induction [NCI]



Countless micro Tran cellular routes induce wound healing results an acceleration of natural collagen induction in the dermal and basal layers.

Comparison

Classification	DTS Roller	Other Rollers	Remarks
Number of needle	540(60 x 9 disks)	192(24 x 8 column)	≈ 2.5 times You can make half million microchannels in 10 minutes.
Thickness of needle	0.2mm	0.25~0.3mm	≈ 1/2 less
Material of needle	SUS 304H Sheet type	SUS 304H Wire type	Same material but different concept of manufacturing.
Shape of needle	Disk needle	Wire needle	1D → 2D concept
Needle drop out during treatment	None	Sometimes happen	Very different
Pain	Little	Much	Very different
Erythema, redness	Short (1/2 ~ 1 day)	Long (1~2 Days)	Less down-time
Chemical bond	None	Use	different
*Needle cutting shape	Diamond (Mosquito)	Circle	Less pain



Professional Treatment Peeling

[Spec: 10 Amp. 2ml e 0.07Fl.oz]

SRS is complex of antioxidant peeling agents which remodeling epidermis with minimum down time but effectively and instantly. It is easy and safe leave on sin system to combine with Microneedling and other aesthetic procedure to enhance anti-aging effect.



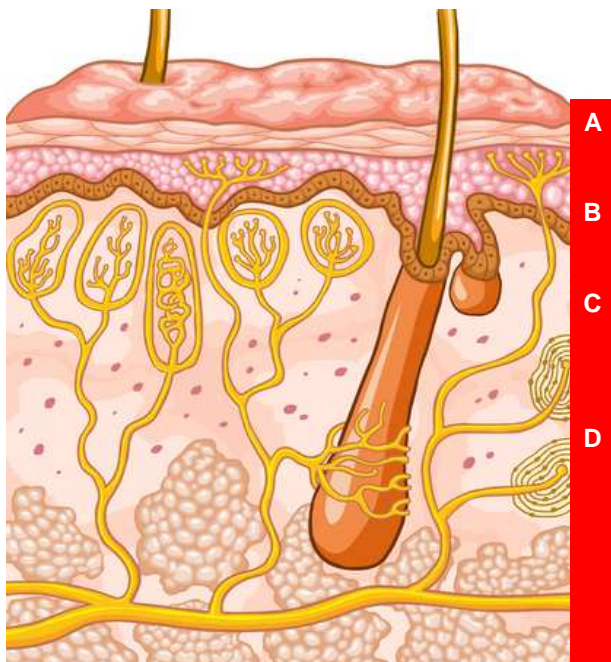
DESCRIPTION

SRS is super facial peeling with very safe and easy to use.

SRS is composed of several AHA acids and can provide to soften epidermis, brighten skin tone, tighten skin texture, ease wrinkle and eliminate acne problem with minimum downtime.

APPLICATION

Wipe targeted area with alcohol to remove any oils and dirt blocking free acid penetration. Use dropper to apply one drop of peeling on the whole face, brush at once after drop of peeling acid to evenly disperse on problem area. If necessary, apply extra 2-3 drops of peeling acid. SRS can be used together either follow after needle rolling or with needle rolling.



■.....A. [Stratum corneum] Phytic Acid

It is extracted from rice bran; acts as a free radical blocker and contributes to clarifying the skin. It is common ingredient in peelings. Very heavy molecules stay in Epidermis to give extra moisturizing effect.

■.....B. [Basal Layer] Lactic Acid

It is another free acid AHAs, is normally sourced from fermented milk. It gets transformed into aceto form Pyruvic acid. It slowly penetrate the skin without producing any imitation, it is milder than other peels, so people with sensitive skin can apply this peel and see the same results as stronger peels, also has a bleaching effect, fight against melanocytes.

■.....C. [Epidermis] Mandelic Acid

It is a free acid AHA extracted from bitter almonds. It has optimum estoliant properties, without causing any erythema or burning sensation. Is very safe. Anti-bacteria, cell growth stimulating effect.

■.....D. [Dermis] Glycolic Acid

It is also AHA(alpha hydroxyl acid), this peel penetrates the dermis but is harsh than previous acids, is good all around acid for normal only skin types to exfoliate and deep cleansing opening clogged pores and provide anti-aging benefits also in acne skin as well, ideal alone to treat acne.

APPLICATION HOW TO USE



Cleansing treatment area



Open the ampoule



Spread the solution



Gentle massage



Use the postcare mask as applicable area

POSTCARE MASKS



FACE



HAND



FOOT



SRS SKIN RENEWAL SYSTEM (GSP15J0CP01) [10 Amp. 2ml e 0.07Fl.oz]

Premature skin aging, photo aging, elastic fiber regeneration, melanin pigmentations, seborrheic impurities

INGREDIENTS

Water (Aqua), Glycerin, glycolic Acid, Lactic Acid, Mandelic Acid, Phytic Acid, Sodium Hydroxide, Alcohol Denat.

Professional Treatment Solution

[Spec: 10 Amp. 2ml e 0.07Fl.oz]

Unique and powerful pharmaceutical grade solution which target and resolve each skin problem (scar, wrinkle, pigment, damaged, dehydrated). It is bacterial free, preservatives free, ph/acidity tested multi peptide anti-oxidant complex.



FEATURES

1. Strong anti-oxidant formulas	2. Pharmaceutical standard of cosmetic product
3. Preservative free formulas	4. High concentration of Hyaluronic Acid
5. Skin friendly pH balanced	6. Effective DNA active cell membrane repair system



AWS Anti-Wrinkle Solution (GAW06J0CA01) [10 amp. 2ml e 0.07Fl.oz]

Combination of active ingredients which stimulates the production of dermal collagen, causing collagen fibres to retract, compact them and fighting flaccidity by producing a tensing effect

INGREDIENTS

Hydrolyzed soy flour, Hydrolyzed sesame protein pg-propyl methylsilanediol, DMAE, Zeamays kernel extract, Quick lift, Lactis proteinum, Hydrolyzed soy protein, Sodium Hyaluronate, Methylsianol manuronate, Tripeptide-10 citrulline



SWS Skin Whitening Solution (GSW06J0CA02) [10 amp. 2ml e 0.07Fl.oz]

Diminishes hyper-pigmentations but also recovers luminosity and smoothness the skin avoiding damage

INGREDIENTS Kojic acid, Alpha-Arbutin, Phyllanthus emblica fruit extract, Morus alba, Chromabright (dimethylmethoxy chromanyl palmitate), Retinol, Salicylic acid, Sodium Hyaluronate, Methylsilanol mannuronate.



PCS Problem Control Solution (GPC06J0CA03) [10 amp. 2ml e 0.07Fl.oz]

Offers antiseptic, antibiotic, antibacterial, antifungal, and even antiviral properties to acne-prone skins

INGREDIENTS Hamamelis extract, Panthenol, Potassium azeloyl diglycinate, Propolis, Salicylic acid, Epilobium fleischeri extract, Lactis proteinum, hydrolyzed soy protein, Sodium Hyaluronate, Methylsilanol mannuronate, Palmitoyl hexapeptide-26



CVS Caviar Concentrate Solution (GCV06J0CA04) [10 amp. 2ml e 0.07Fl.oz]

Provides super hydration immediately and prevents and improves the signs of ageing over the skin. Healing and regenerating because of the proteins, lipids and vitamins of the caviar.

INGREDIENTS Caviar extract, Salmon extract, Panthenol. Glycosaminoglycans, Sodium hyaluronate



CTS Cytokine Concentrate Solution (GCT06J0CA05) [10 amp. 2ml e 0.07Fl.oz]

Contains high levels of cytokines and collagen, key factor to interact, restore and maintain cell skin integrity, activating new cellular tissue, giving a retraction of skin dermal fibers.

INGREDIENTS Lactis proteinum, Hydrolyzed soy protein, Acetyl heptapeptide-4, Zinc/Magnesium/Copper and Manganese gluconates, Sodium hyaluronate

Professional Post Care Creams [NET WT. 250g/8.8oz /JAR]

Ideal formula to give soothing, hydrating, wound healing accelerating aid to skin instantly after Microneedling, laser, peel and other aggressive aesthetic treatment.



MFC Multi-Functional Regenerative Cream (GMF05J8CC05)

Enjoy the great effects of anti-oxidation, anti-aging and whitening with multi-active ingredient.

Apply a thin layer of the product on the affected area and gently tap with fingers, May be used morning and/or evening.

INGREDIENTS

Ubiquinone, Adenosine, Arbutin, Arnica Montana flower extract, Achillea millefolium extract, Gentiana lutea root extract, Artemisia Absinthium extract, Hydrogenated lecithin, Tocopheryl acetate, Centella asiatica extract.



HSC Intensive Problem Control Cream (GHS05J8CC06)

Designed to help restore damaged skin and give moistures after invasive skin treatments
Apply a thin layer of the product on the affected area and gently tap with fingers, May be used morning and/or evening.

INGREDIENTS

Sodium hyaluronate, Arnica Montana flower extract, Snail secretion filtrate, Salicylic acid.



PCC Intensive Problem Control Cream (GPC05J8CC07)

Non-oily cream for daily use and indicated to help regulate excess oil production in mixed and oily skins.

Carefully clean the area of application which may be the whole face or more localized, May be used morning and/or evening.

INGREDIENTS

Portulaca oleracea extract, Triclosan, Centella asiatica extract, Salicylic acid.

 **Special Bio Masks**

Special bio-polymer structured mask immediately take away skin temperature to lower, make skin cool down, soothed, hydrated after strong aesthetic procedure. Peptide Hyaluronic acid, Aloevera and Vitamin complex contained high quality wound-healing mask. These sterilized masks which are bacteria free, safe to use after Microneedling and aesthetic procedures.



EZ CO2 MASK (GEZ05J5CM01) / 5 applications

(20g jar x 5 & 12g gel mask x 5 / Box)

CO2 is absorbed mainly through tissue fluid. It easily reaches vessels, and even muscles and nerves.

Cosmetic and medical effects are obtained quickly and easily.

INGREDIENTS

Water, Alcohol, Glycerin, Chitosan, Lactic acid, Coceth-7, PPG-1/PEG-9 Lauryl Glycol Ether, PEG-40 Hydrogenated Castor Oil, Lactobacillus, Scutellaria baicalensis root, Camelia sinensis leaf, Artemisisa leaf, Houuttuynia cordata, Citros junos, Ferment extract, Castor oil, Arnica Montana flower extract, Phytonadione, Tocopheryl acetate, Ascorbic acid, Triethanolamine, Sodium bicarbonate, Sodium hydroxide.

EFFECTS

Skin Brightening	Bohr Effects	Anti-inflammation effects	Improving Blood flow
Vasovagal reaction	Skin texture improvement	Partial Slimming	

EZ CO2 MASK



PEPTIDE GEL MASK (GGM02J5CM03) / 5 applications (39g x 5 gel mask pouch / Box)

1. Temperature sensitive bio matrix: Moisture evaporates and cools the skin when PAG mask touches skin surface.
2. Soluble Hydrogel System: The physical gel structure becomes more loose as the temperature increases and the

active ingredients releases from gel to penetrate into the skin.

3. Microcapsule: Active ingredients are micro-capsule.

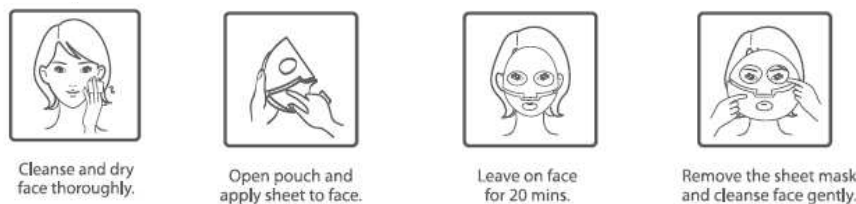
INGREDIENTS

Water, Glycerin, Ceratonia siliqua gum, Chondrus crispus(Carrageenan) "Scutellaria baicalensis root extract, Paeonia suffruticosa root extract, Glycyrrhiza glabra (Licorice) root extract", Dipotassium glycyrrhizate, Portulaca oleracea extract, Arnica Montana flower extract, Phenoxyethanol, Methylparaben, Propylparaben, Disodium EDTA, Acetyl hexapeptide-8, Chamomilla recutita (Matricaria) flower extract, Potassium hydroxide, Hydrolyzed collagen, Sodium hyaluronate,

EFFECTS

1. Healing: Chamomile, Arnica, and Vitamin-K for soothing effect
2. Moisture: PGM mask can moisturize 7 times more than cleansing and 3 times more than topical moisturizing cream or cloth mask
3. Cooling: Moisture evaporates from the mask and it gives cooling effects
4. Nutrition: Hexa-peptides, Collagen, Hyaluronic acids for skin rejuvenation

HOW TO USE PEPTIDE GEL MASK



* It prevents a control from outside to evaporate by laminate processing, maximum Transdermal Delivery and close adhesion feeling.



Daily Care Serums [NET WT .30ml/1.0Fl.oz/Bottle]

Innovative formula to optimize and prolong anti-ageing effect

Strong scavenger of free radicals, powerful DNA repair functioned formula



AWS Nano Anti-Wrinkle Serum (GAW03J5CS01)

Neutralizes oxidative processes, reduces free radicals and acts against photo ageing.

Apply a thin layer of the product on the affected area and gently tap with fingers. AWS is designed for post-laser, post-peeling, post-rolling therapy and daily skincare to enhance treatment result.

INGREDIENTS

Adenosine, Ubiquinone, Tocopheryl acetate, Portulaca oleracea extract, Arnica Montana flower extract, Achillea millefolium extract, Gentiana lutea root extract, Artemisia absinthium extract.



SWS Nano Skin Whitening Serum (GSW03J5CS02)

With ENB-VCE in the form of nano-liposome, which it helps correct facial hyper-pigmentations and brighten skin tone. Apply a thin layer of the product on the affected area and gently tap with fingers. SWS is designed for post-laser, post-peeling, post-rolling therapy and daily skincare to enhance treatment result.

INGREDIENTS

Ethyl ascorbic acid, Tocopheryl acetate, Portulaca oleracea extract, Arnica Montana flower extract, Achillea millefolium extract, Gentiana lutea root extract, Artemisia absinthium extract.



PCS Intensive Problem Control Serum (GPC03J5CS03)

Non-oily serum for daily use and indicated to help regulate excess oil production in mixed and oily skins.

Carefully clean the area of application which may be the whole face or more localized. PCS is designed for post-laser, post-peeling, post-rolling therapy and daily skincare to enhance treatment result.

INGREDIENTS

Portulaca oleracea extract, Salicylic acid, Citric acid, Sodium hyaluronate.

Daily Care Creams [NET WT .50g/1.7Fl.oz/Tub]

Nano technology driven particles of active ingredients penetrates efficiently through skin barrier.



HSC Intensive Hydro-Soothing Cream (GHS03J9CC01)

Designed to help restore damaged skin and give moistures after invasive skin treatments

Apply a thin layer of the product on the affected area and gently tap with fingers. May it can be used morning and/or evening.

INGREDIENTS

Sodium hyaluronate, Arnica Montana flower extract, Snail secretion filtrate, Salicylic acid.



MFC Intensive Multi-Functional Cream (GMF03J9CC02)

Enjoy the great effects of anti-oxidation, anti-aging and whitening with NANO ENB-VCE.

Apply a thin layer of the product on the affected area and gently tap with fingers. May it can be used morning and/or evening.

INGREDIENTS

Ubiquinone, Adenosine, Arbutin, Arnica Montana flower extract, Achillea millefolium extract, Gentiana lutea root extract, Artemisia absinthium extract, Hydrogenated lecithin, Tocopheryl acetate, Centella asiatica extract.



PCC Intensive Problem Control Cream (GPC03J9CC03)

Non-oily cream for daily use and indicated to help regulate excess oil production in mixed and oily skins.

Carefully clean the area of application which may be the whole face or more localized. May it can be used morning and/or evening.

INGREDIENTS

Portulaca oleracea extract, Triclosan, Centella asiatica extract, Salicylic acid.



BBC Intensive Blemish Balm Cream (GBB03J0CC04)

Use daily for UV protection against damaging UVA and UVB rays without leaving any white residue.

Use daily on face, neck and areas frequently exposed to sun ray

INGREDIENTS

Titanium dioxide, Alumina, Triethoxycaprylsilane, Arbutin, Tocopheryl acetate, Portulaca oleracea extract, Camellia sinensis leaf extract, Adenosine.

Daily Care Kit

Daily care help to optimize and prolong the professional results obtained.

A. ANTI WRINKLE LINE

Contents



1. Nano Anti-Wrinkle Serum 30ml
2. Intensive Hydro-Soothing Cream 50g
3. Intensive Multi-Functional Cream 50g
4. Intensive Blemish Balm Cream 50g
5. Peptide Gel Mask Set 5 Pouch (1 Box)

W. WHITENING LINE

Contents



1. Nano Skin Whitening Serum 30ml
2. Intensive Hydro-Soothing Cream 50g
3. Intensive Multi-Functional Cream 50g
4. Intensive Blemish Balm Cream 50g
5. Peptide Gel Mask Set 5 Pouch (1Box)

P. PROBLEM CONTROL LINE Contents



1. Intensive Problem Control Serum 30g
2. Intensive Hydro-Soothing Cream 50g
3. Intensive Problem Control Cream 50g
4. Intensive Blemish Balm Cream 50g
5. Peptide Gel Mask Set 5 Pouch (1 Box)



2 BEAUTY EX INC

Specialized in product and solution for the anti-aging and skin rejuvenation
which are the dreams for human wellness